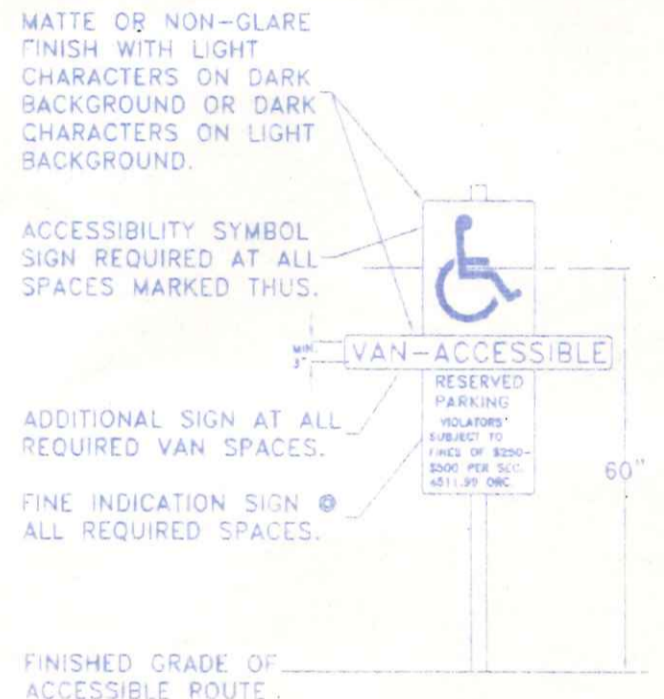
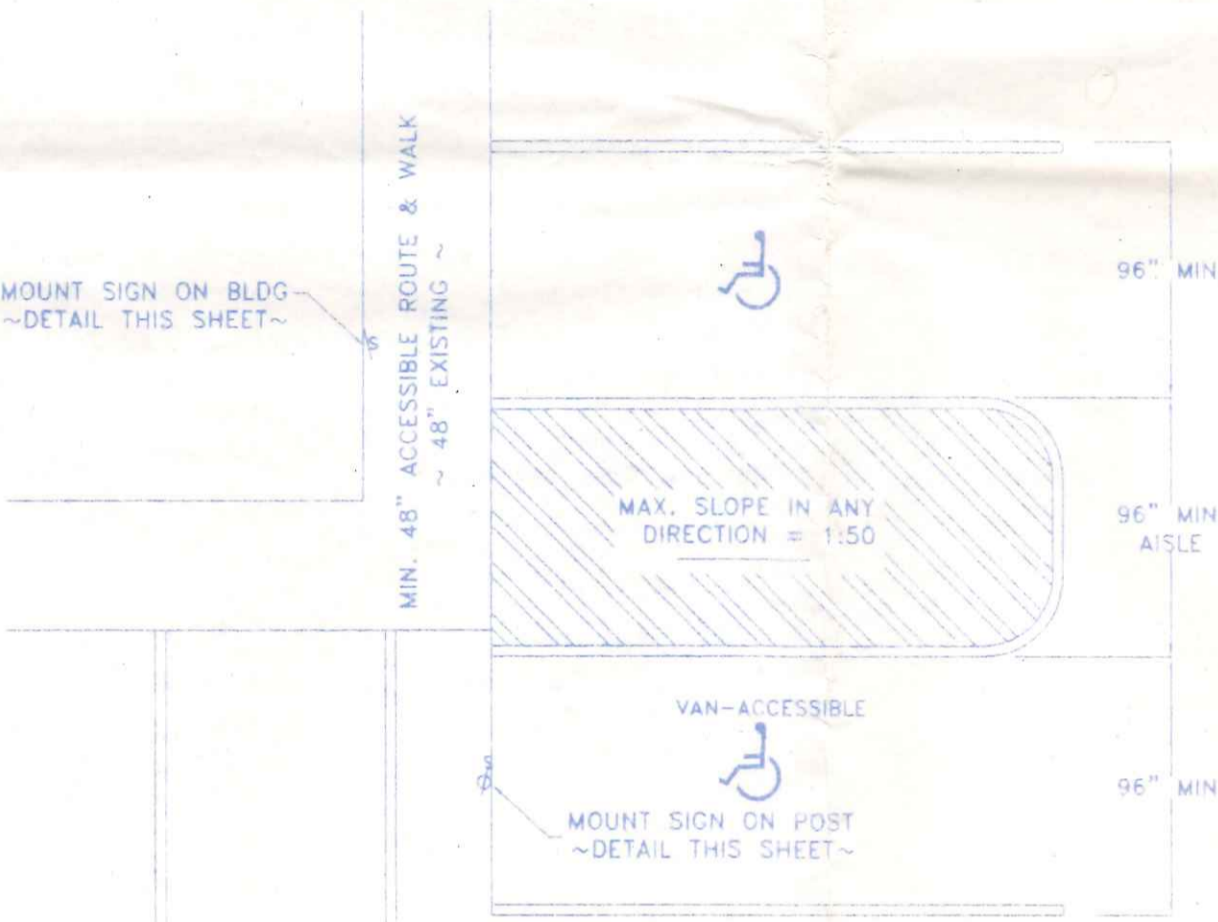
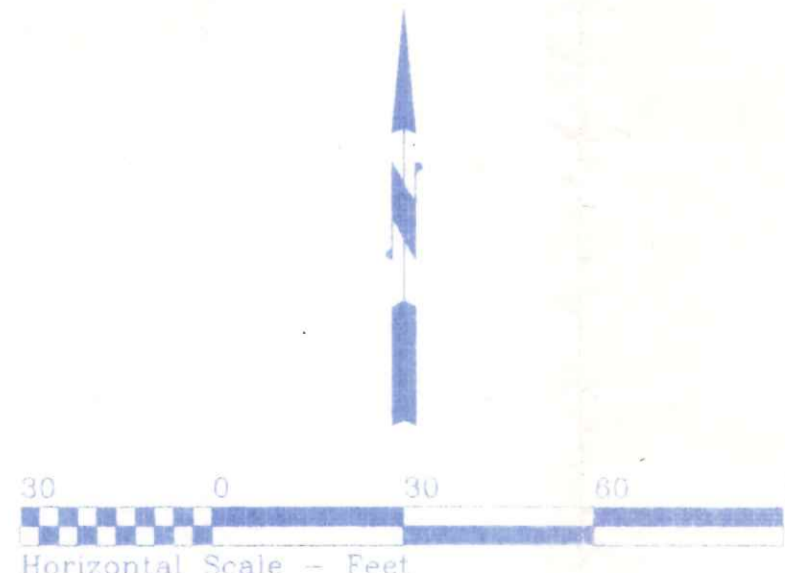
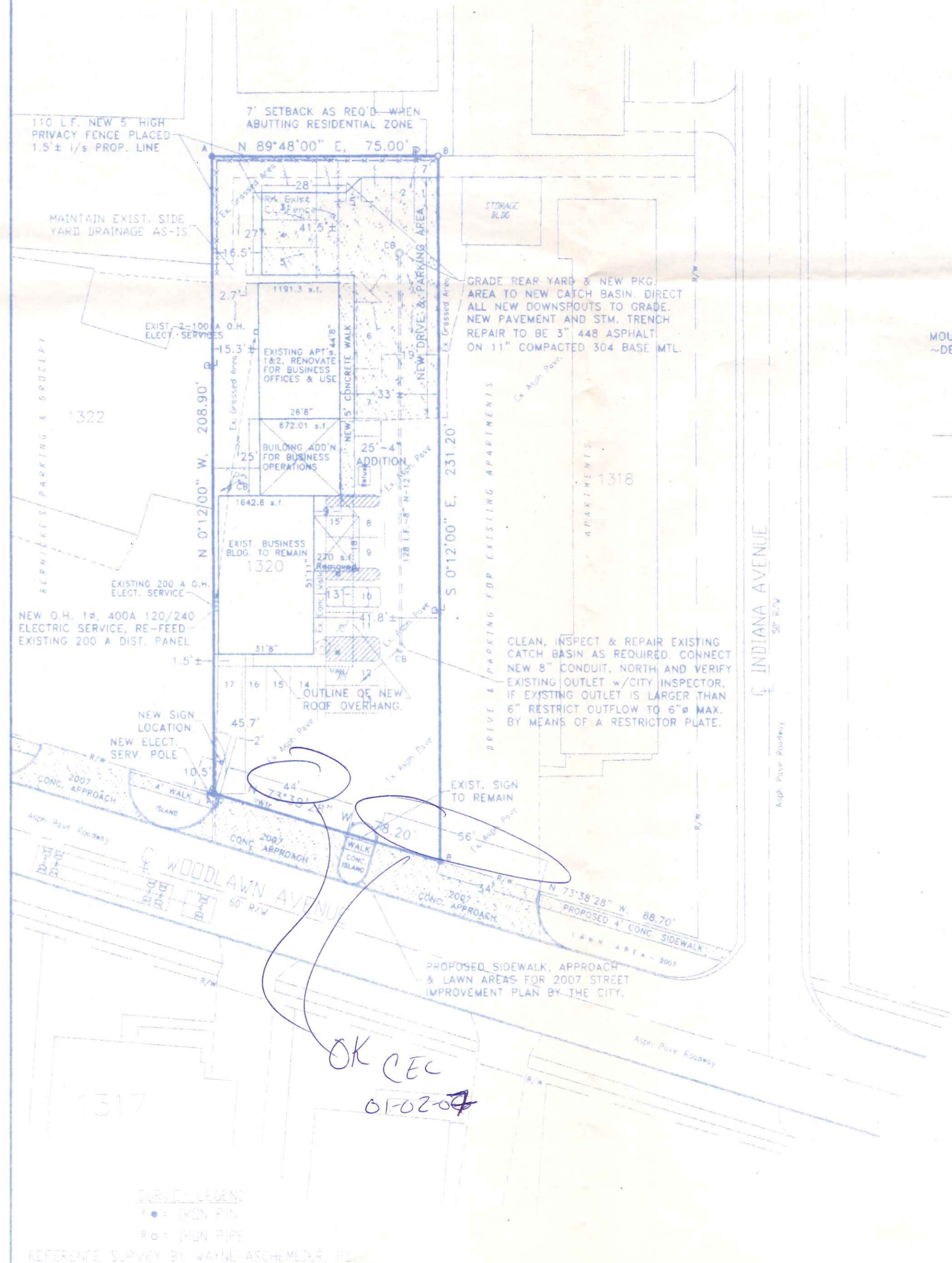


LOCATION MAP



NOTE:
VAN ACCESSIBLE SPACES REQUIRE A MIN. ACCESS AISLE WIDTH OF 96". ONE OF EVERY 8 HANDICAPPED SPACES (BUT NOT LESS THAN ONE) SPACE SHALL BE MADE VAN ACCESSIBLE & SHALL BE SO DESIGNATED. SEE SIGN DETAIL THIS SHEET.

ACCESSIBLE PARKING SPACE SIGN MOUNTING HEIGHT & DETAIL
NO SCALE

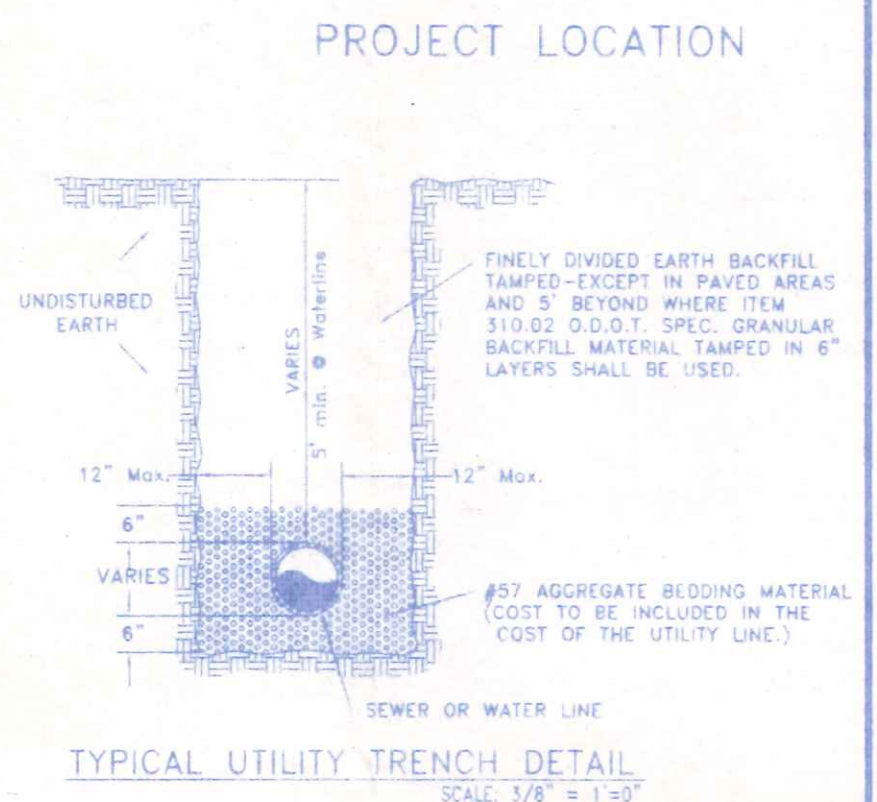
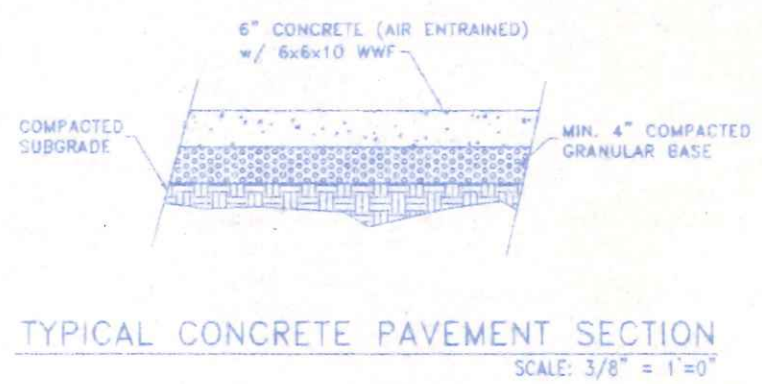
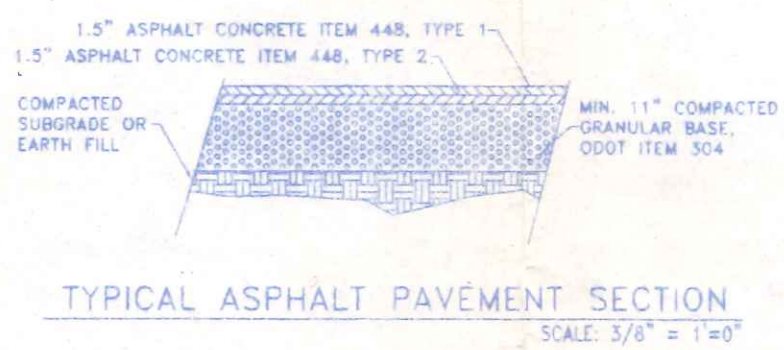
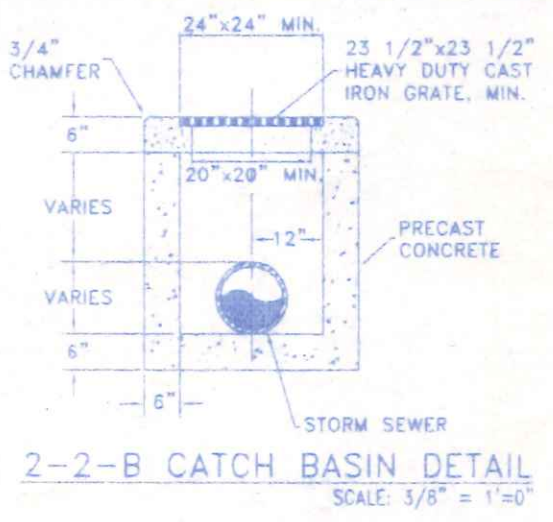


SITE LOCATION PLAN FOR
TANO'S PIZZA
Being part of the Northeast Quarter (1/4), of Section 14, Township 5 North, Range 6 East, Napoleon Township, City of Napoleon, Henry County, Ohio
LOT AREA = 0.379 ACRES (16,503.75 SQ. FT.)
ZONING = C-3, LOCAL COMMERCIAL
15 PARKING SPACES REQUIRED - TOTAL
17 PARKING SPACES PROVIDED - TOTAL
2 HANDICAPPED SPACE (1 VAN ACCESSIBLE)

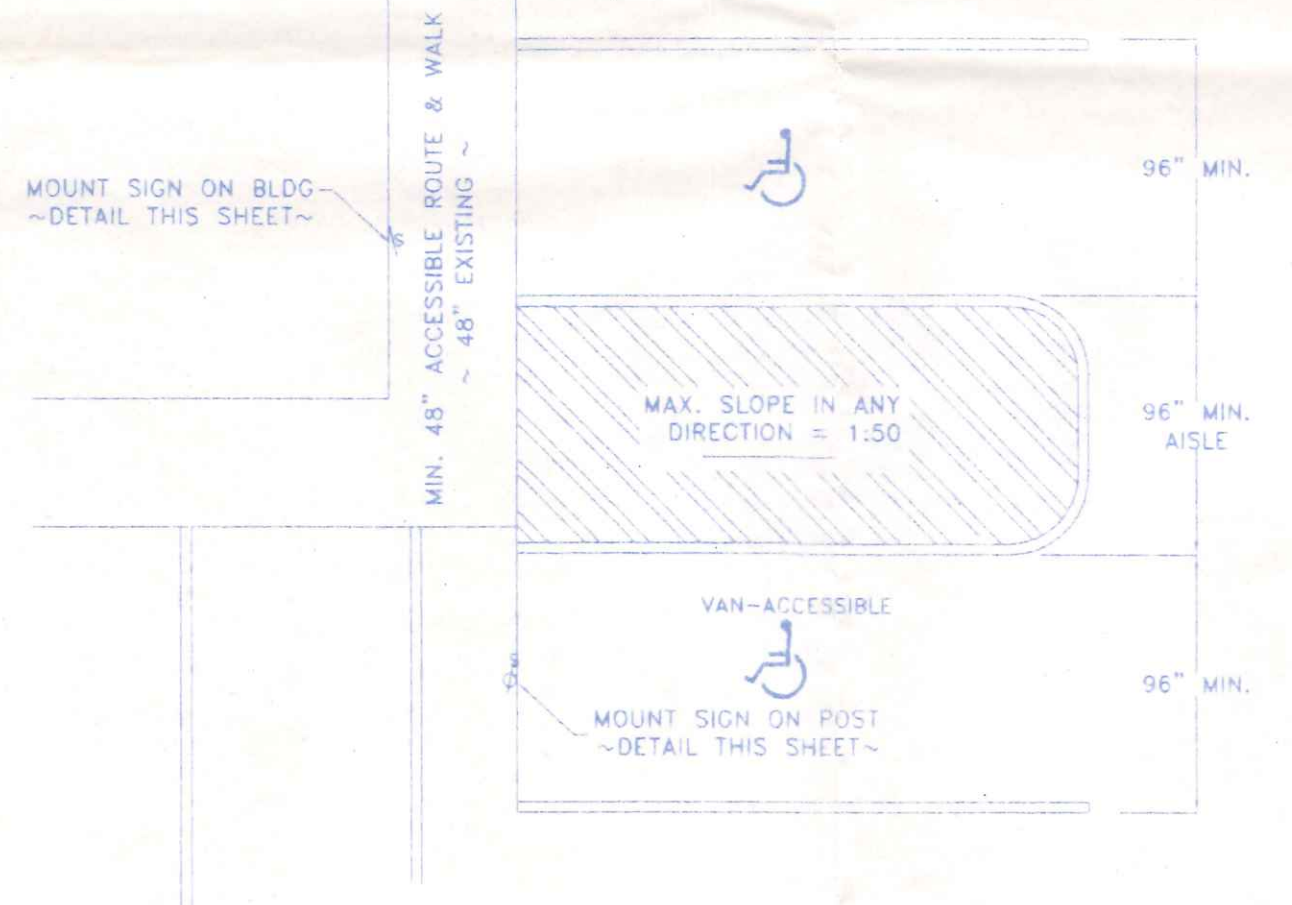
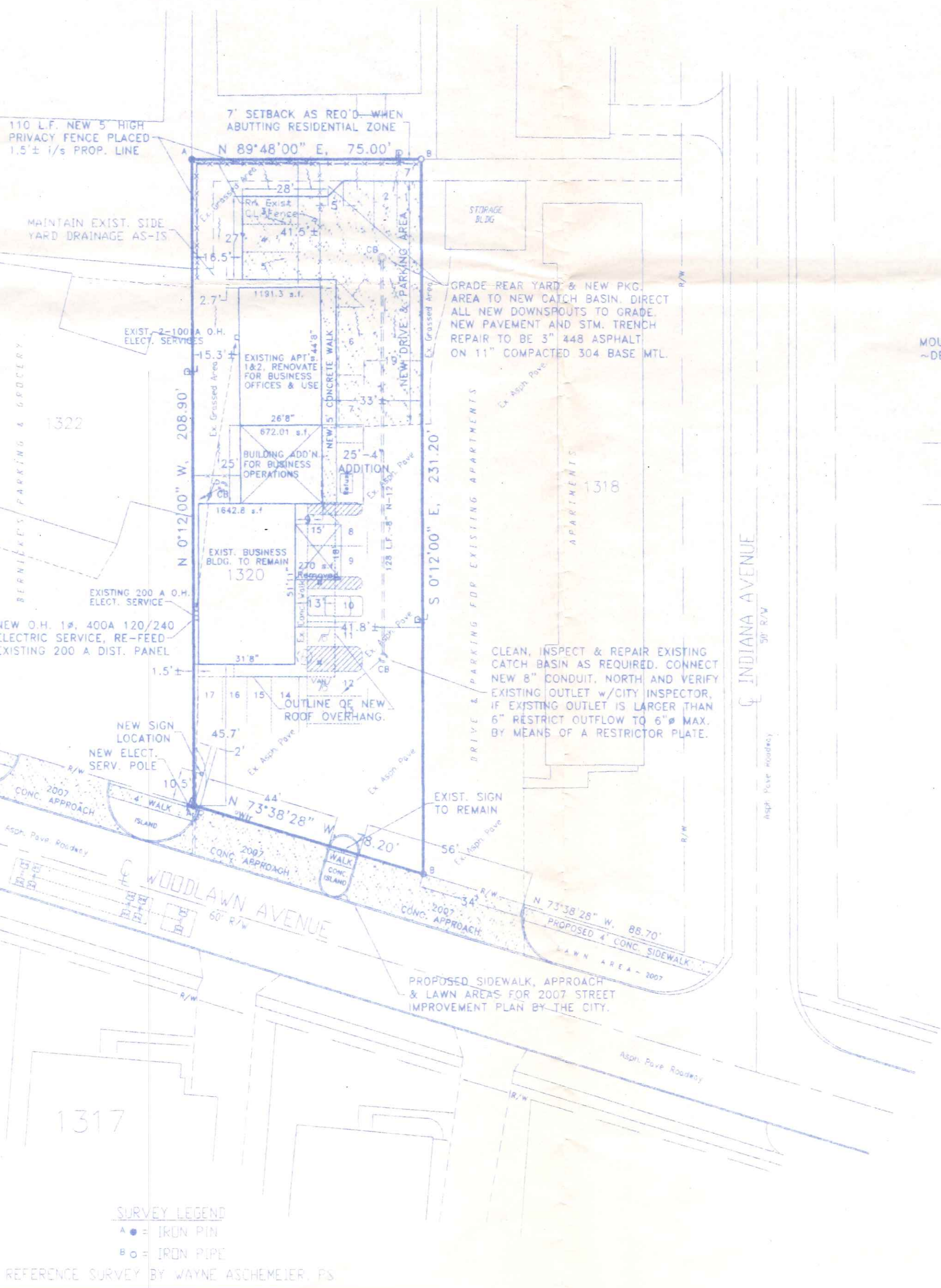
TANO'S PIZZA		
1320 WOODLAWN AVENUE	419.599-1057	NAPOLEON, OHIO
DIRECTORY: C:\ND\CUSTOM	FILE NAME: TANO'S SITEPLAN	REVISED: DEC., 2006
DRAWN BY: R.D.S. ~ dba: NEW DIMENSIONS		SCALE: 1" = 30'
SITE PLAN & LOCATION PLAN		DATE: SEPT., 2006
CARRY OUT PIZZA RESTAURANT		DRAWING NUMBER
		S - 1

WORKING DAYS BEFORE YOU DIG
CALL TOLL FREE 800-362-2764
OHIO UTILITIES PROTECTION SERVICE
OHIO UTILITIES PROTECTION SERVICE
The underground utilities shown herein are only approximate. Some of the utilities were located by field observation, where possible, and the remaining utilities were derived from various records. Exact locations must be determined by the UTILITY COMPANIES. For more information, telephone the Ohio Utilities Protection Service (OUAPS) toll free at 1-800-362-2764. (Telephone 2 working days before any digging.)

LEGEND
● = IRON PIN
○ = IRON PIPE
REFERENCE SURVEY BY WAYNE ASCHMEHLER, P.E.

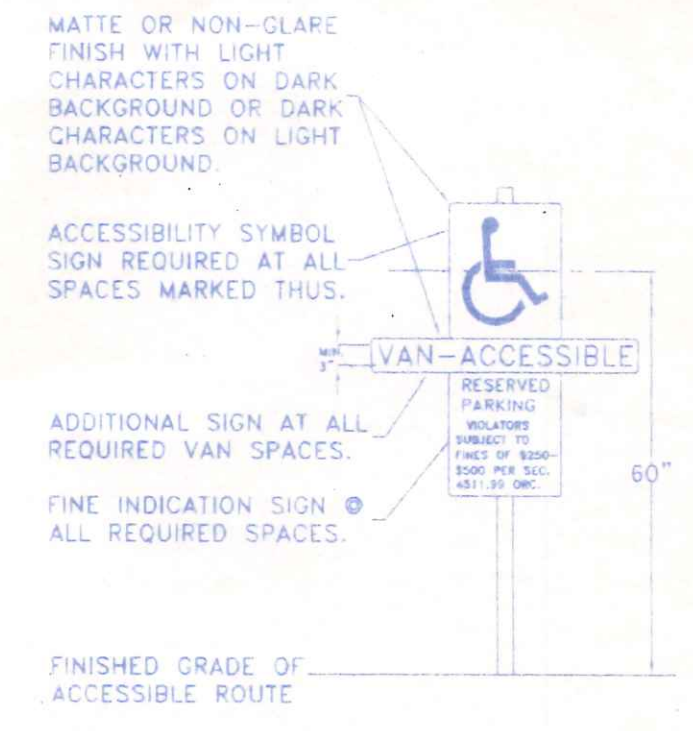


LOCATION MAP

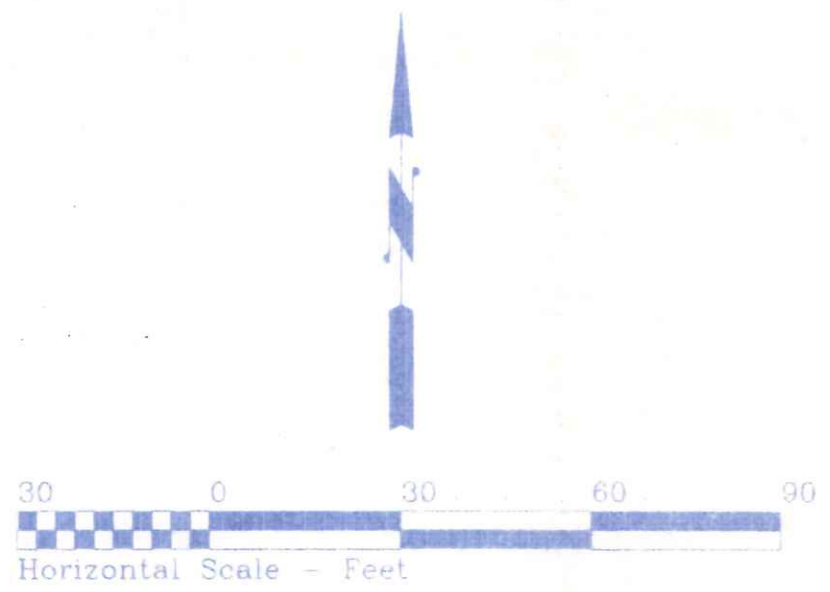


ACCESSIBLE PARKING SPACE DIMENSIONS
NO SCALE

NOTE:
VAN ACCESSIBLE SPACES REQUIRE A MIN. ACCESS AISLE WIDTH OF 96". ONE OF EVERY 8 HANDICAPPED SPACES (BUT NOT LESS THAN ONE) SPACE SHALL BE MADE VAN ACCESSIBLE & SHALL BE SO DESIGNATED. SEE SIGN DETAIL THIS SHEET.



ACCESSIBLE PARKING SPACE SIGN MOUNTING HEIGHT & DETAIL
NO SCALE



SITE LOCATION PLAN FOR
TANO'S PIZZA
Being part of the Northeast Quarter (1/4), of Section 14, Township 5 North, Range 6 East, Napoleon Township, City of Napoleon, Henry County, Ohio

LOT AREA = 0.379 ACRES (16,503.75 SQ. FT.)
ZONING = C-3, LOCAL COMMERCIAL
15 PARKING SPACES REQUIRED - TOTAL
17 PARKING SPACES PROVIDED - TOTAL
2 HANDICAPPED SPACE (1 VAN ACCESSIBLE)

SURVEY LEGEND
A ● = IRON PIN
B ○ = IRON PIPE
REFERENCE SURVEY BY WAYNE ASICHEMEIER, P.S.



OHIO UTILITIES PROTECTION SERVICE
The underground utilities shown herein are only approximate. Some of the utilities were located by field observation, where possible, and the remaining utilities were derived from various records. Exact locations must be determined by the UTILITY COMPANIES. For exact locations, telephone the Ohio Utilities Protection Service (O.U.P.S.) toll free at 1-800-362-2764. (Telephone 2 working days before any digging.)

TANO'S PIZZA		
1320 WOODLAWN AVENUE	419.599-1057	NAPOLEON, OHIO
DIRECTORY: C:\ND\CUSTOM	FILE NAME: TANOS\SITEPLAN	REVISED: DEC., 2006
DRAWN BY: R.D.S. ~ dba: NEW DIMENSIONS		SCALE: 1" = 30'
SITE PLAN & LOCATION PLAN		DATE: SEPT., 2006
CARRY OUT PIZZA RESTAURANT		DRAWING NUMBER: S - 1